



ARTEFACT DESIGN

POB 102

Cardiff, CA 92007

(760) 944-3502

ILLUSTRATOR INFOGRAPHIC

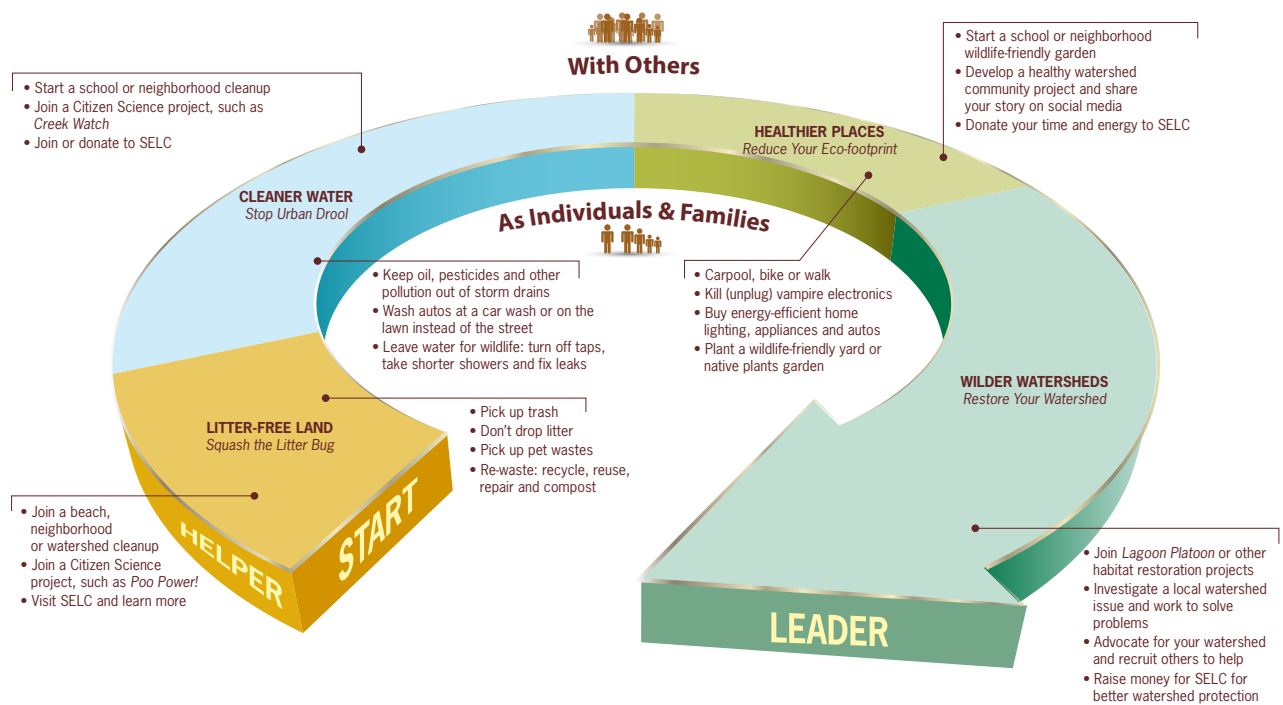
Infographic for client created using Adobe Illustrator.



San Elijo Lagoon CONSERVANCY
Connecting communities. Protecting nature.

Take Action Pathway *From aware to restore, from helper to leader*

You live in a watershed (everyone does). The health of your watershed depends on you. To help your watershed, find where you are on this action pathway — what conservation actions are you currently doing? Now figure out what new action you could take to move from a watershed helper to a leader.



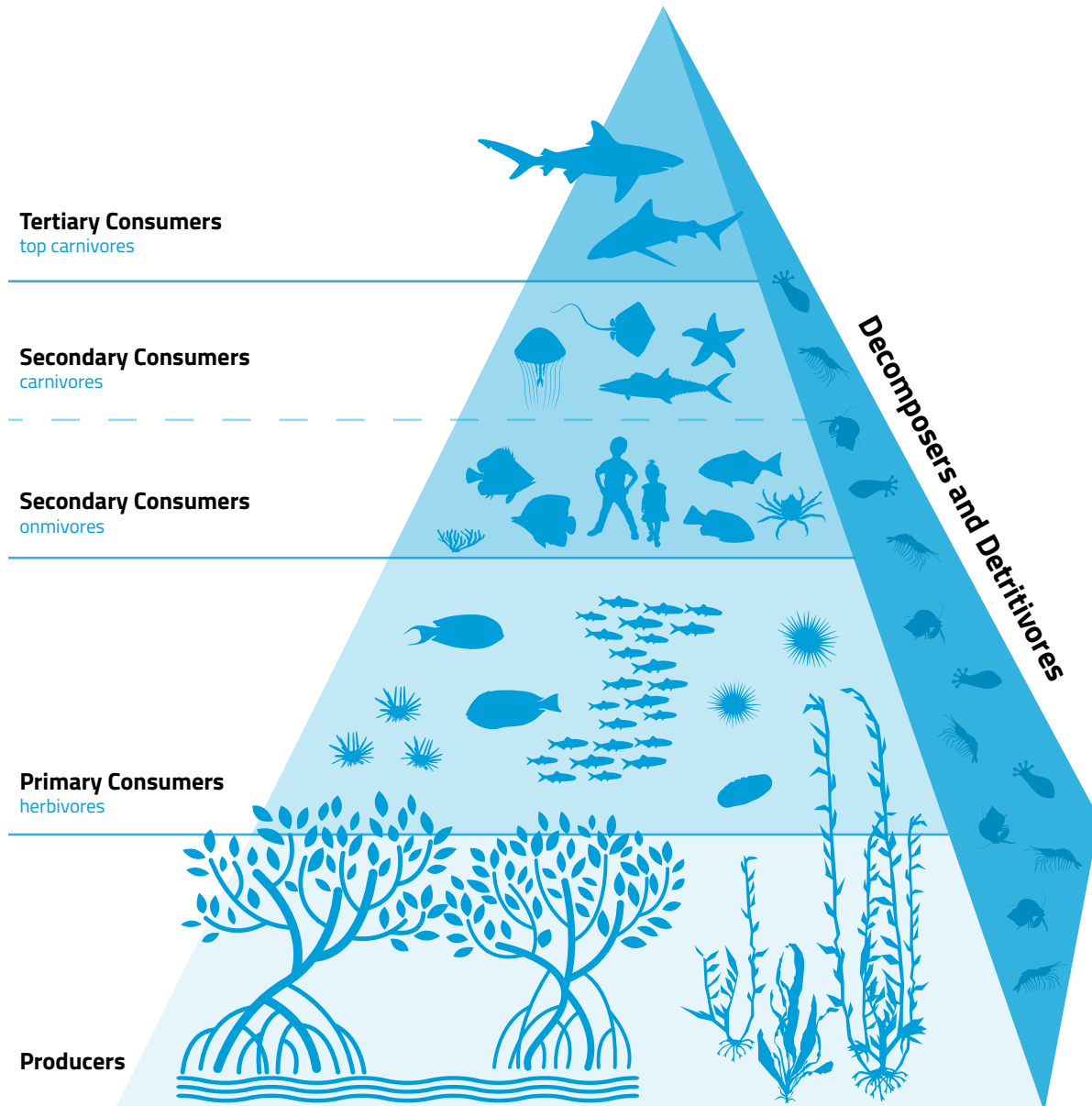


ARTEFACT DESIGN

POB 102
Cardiff, CA 92007
(760) 944-3502

ILLUSTRATOR INFOGRAPHIC

Food pyramid for aquarium educator's guide using Adobe Illustrator.





ARTEFACT DESIGN

POB 102

Cardiff, CA 92007

(760) 944-3502

INTERPRETIVE PANEL DESIGN, LAYOUT, AND ILLUSTRATION

Interpretive panel for CA Border Field State Park. Client supplied photo, Artefact Design illustration of Tijuana River watershed using Adobe Illustrator.

Trash has no borders La basura no tiene fronteras

You're in a place where water from the Tijuana River watershed crosses the border. Some materials that flow downstream help to create beaches, but too much sediment and trash can smother the salt marsh. These catch basins are one solution. Together, they hold back a football field-sized area of sediment and trash 3-feet high.

Estás en un lugar donde el agua de la cuenca del Río Tijuana cruza la frontera. Algunos materiales que fluyen río abajo ayudan a crear playas, pero demasiados sedimentos y basura pueden sofocar la marisma. Estos vasos sedimentadores son una solución. Juntos retienen una cantidad de sedimentos y basura del tamaño de un campo de fútbol con 3 pies de altura.



Basins capture flowing trash before it impacts the wetland and becomes marine pollutants.

Las barreras captan la basura fluyente antes de que ésta impacte al humedal y se convierta en contaminación marina.

Estuary Protection Protección del estuario

1. Intercept, horizontal actions
stop the sediment slugs and
trash before they reach the
estuary.

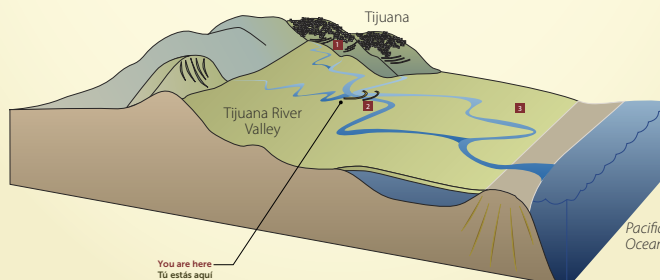
Ello evita, ya basta la
realización de acciones para
estabilizar flujos y retener
la basura antes de que cruce
la frontera.

2. The Sedimentation Basins
hold back sediment and trash
before they reach the
estuary.

Los vasos sedimentadores
retienen sedimentos y basura
antes de que lleguen al
estuario.

3. Coastal wetland restoration
improves water quality and
restores habitat for nature's
health and ours.

La restauración de los
humedales costeros mejora
la calidad del agua y el
hábitat natural en beneficio
de la salud de la naturaleza
y de nosotros.





ARTEFACT DESIGN

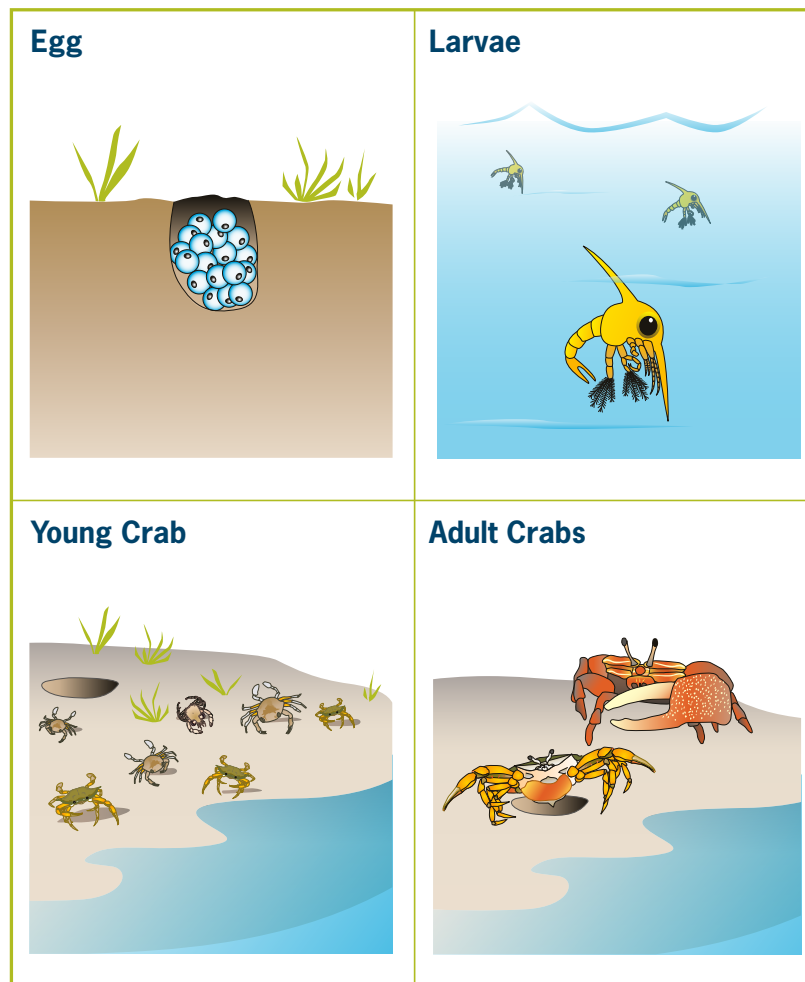
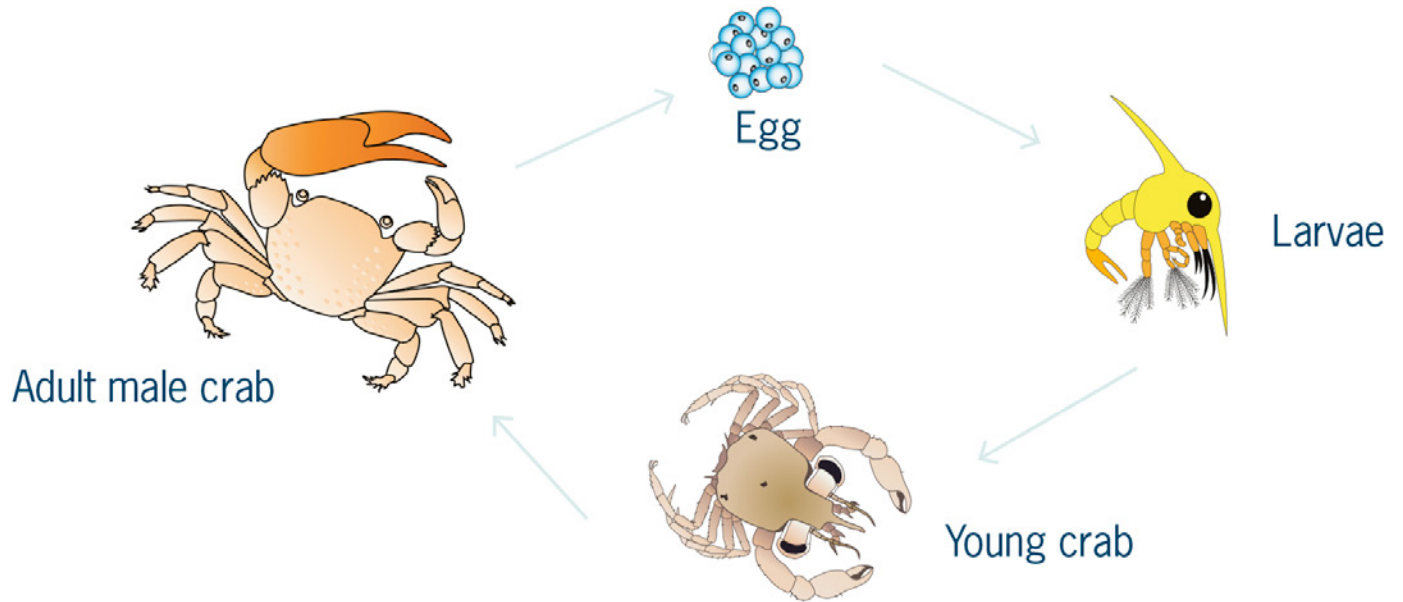
POB 102

Cardiff, CA 92007

(760) 944-3502

ILLUSTRATIONS FOR TEACHERS' GUIDE

Created for a client on a limited budget using a combination of stock animal images modified by Artefact Design and with original drawings using Adobe Illustrator.





ARTEFACT DESIGN

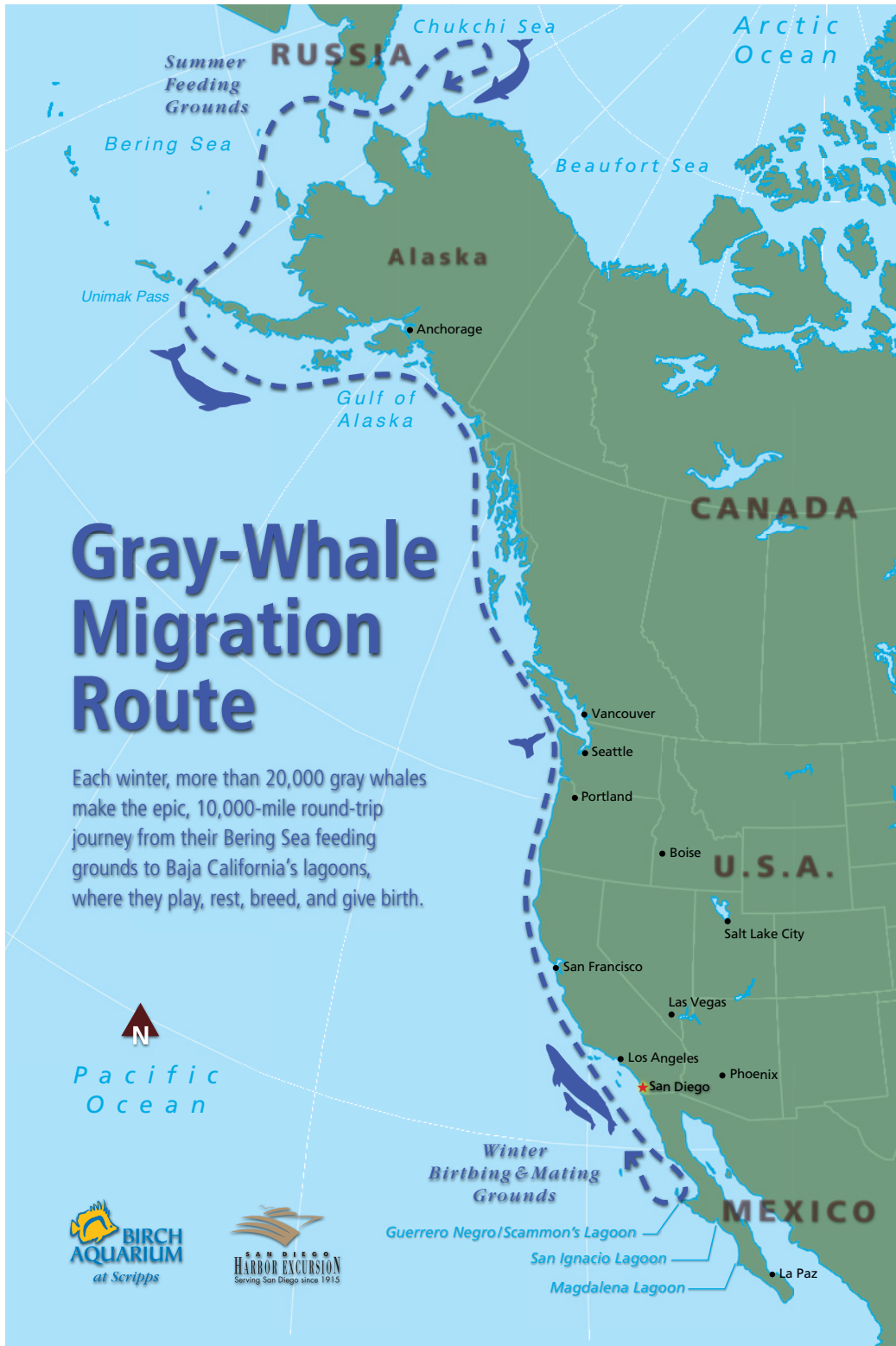
POB 102

Cardiff, CA 92007

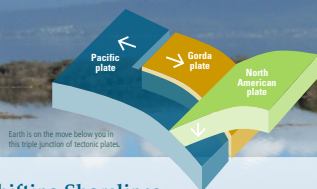
(760) 944-3502

ILLUSTRATOR INFOGRAPHIC

Gray-Whale migration route map for Birch Aquarium Whale Fest using Adobe Illustrator.

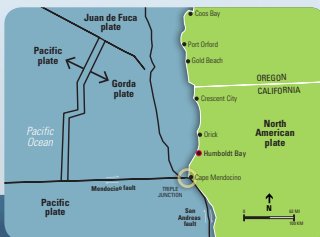


Life in the Balance



Shifting Shorelines

Where you are standing, Humboldt Bay is slowly sinking or subsiding. The tectonic movement of the Gorda Plate going under the North American Plate is dragging the Northern California coastline down.



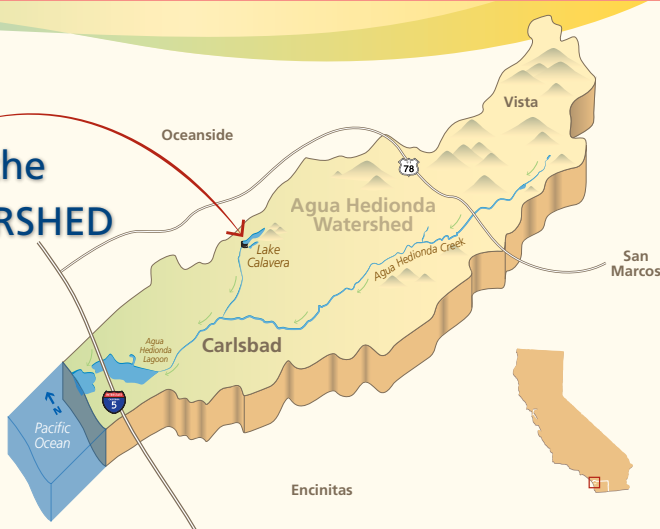
Rising Seas

Imagine Humboldt Bay in 50 to 100 years. As the climate warms, sea levels will continue to rise, coastal flooding will increase and possibly overwhelm beaches and dunes. If allowed space, coastal habitats may migrate inland in some areas.



You Are Here in the
AGUA HEDIONDA WATERSHED

All of the water in a watershed, whether on the surface or underground, eventually drains into the same place. In the Agua Hedionda Watershed, that place is our beaches. Whatever is on the ground gets washed there too. So, if you wouldn't want to swim in it, please don't leave it on the ground!

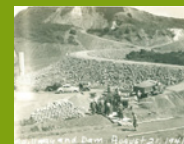


Lake Calavera

This dam was built in 1940 by the Carlsbad Mutual Water Company to store drinking water for the community.



The Calavera Dam site before construction began in 1940.



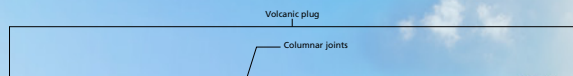
The dam was built with rock and sand from the quarry on Mount Calavera.

It's a Volcano!

The hill before you is what's left of one of North America's smallest volcanos. Mount Calavera is a "volcanic plug" — the cooled and hardened lava in the volcano's once molten throat.

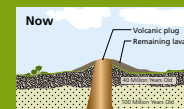
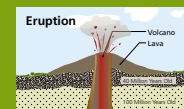
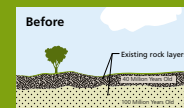
Columns of Lava

The pillars of rock are called "columnar joints." When the lava at the center of the volcano cooled, it contracted and split into these six-sided columns.



Mt. Calavera

Geologists believe this volcano erupted 15–20 million years ago.



Information for this panel was provided by the MiraCosta College Physical Sciences Department.



ARTEFACT DESIGN

POB 102

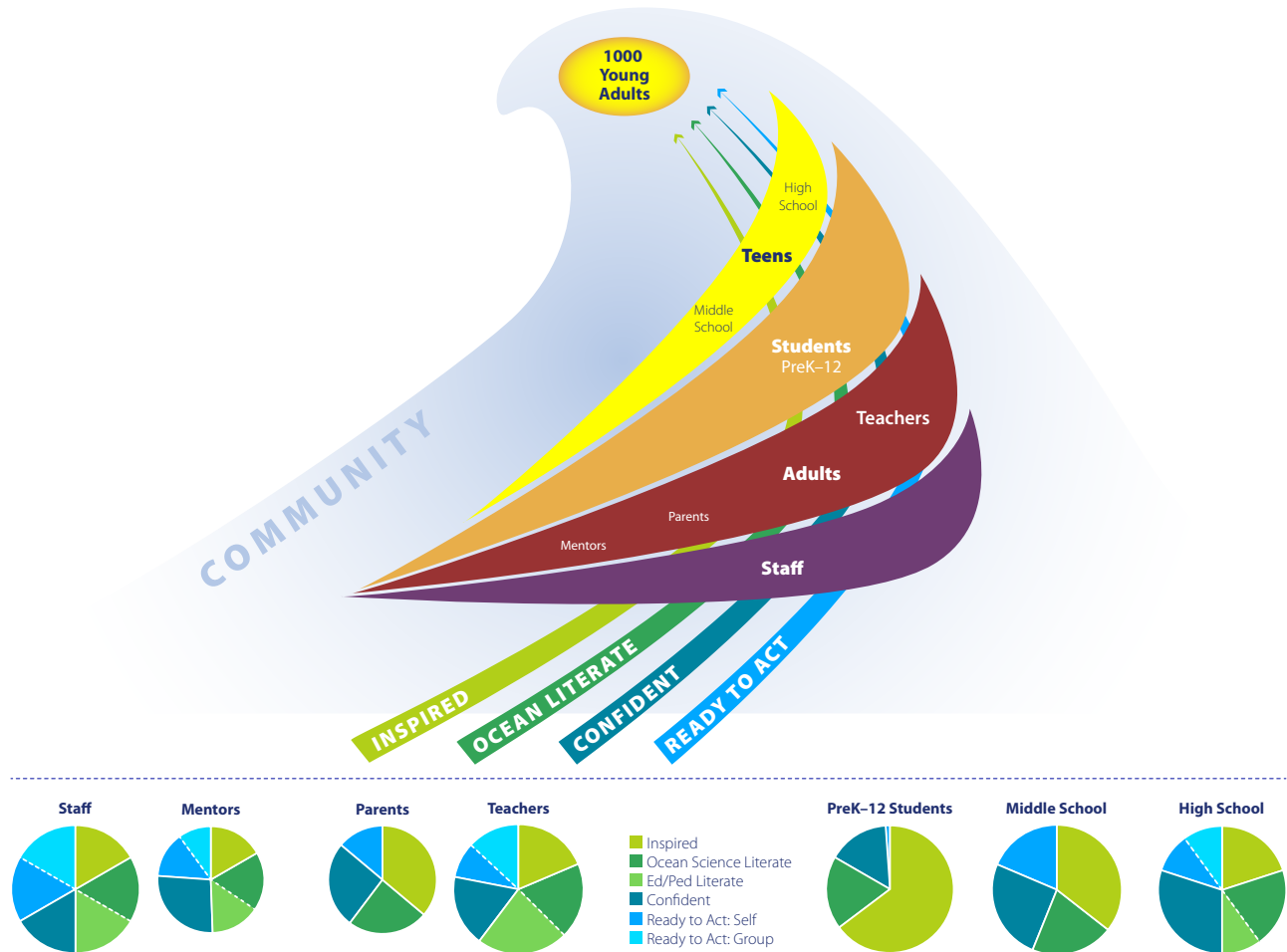
Cardiff, CA 92007

(760) 944-3502

ILLUSTRATOR INFOGRAPHIC

Infographic for Monterey Bay Aquarium created in Adobe Illustrator.

Monterey Bay Aquarium • Education Programs Pipeline



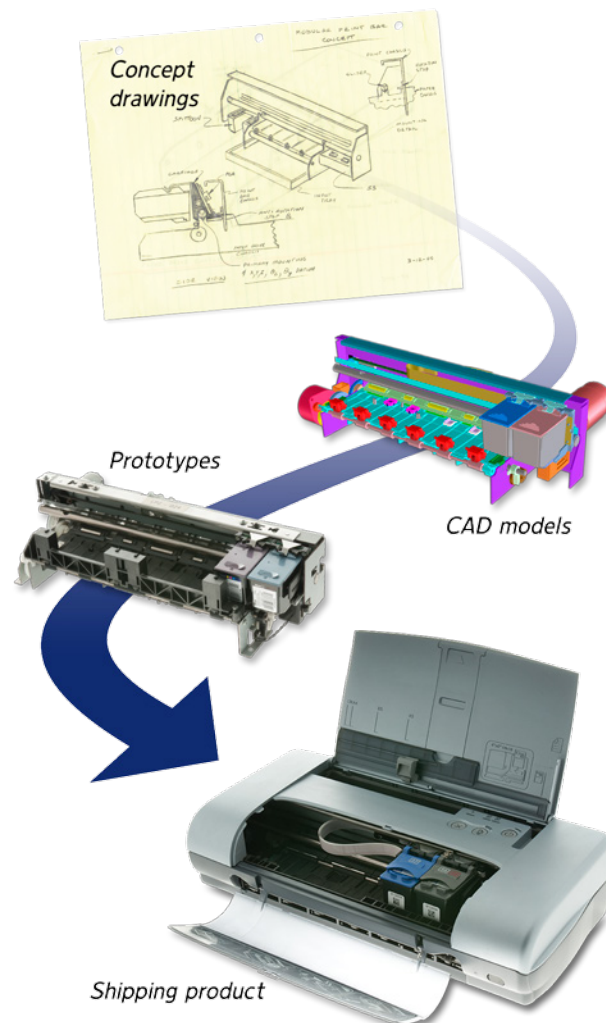
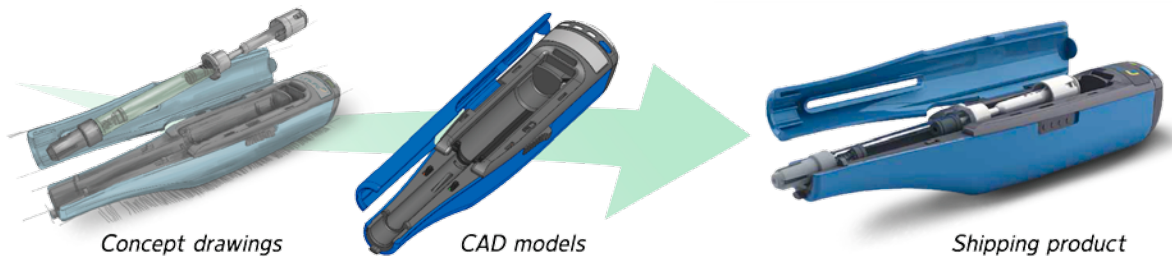


ARTEFACT DESIGN

POB 102
Cardiff, CA 92007
(760) 944-3502

3D MODEL AND ILLUSTRATOR INFOGRAPHIC

Infographic for a product development engineering firm's brochure. Client supplied 3D models and drawings. Artefact Design layout and graphics.





ARTEFACT DESIGN

POB 102

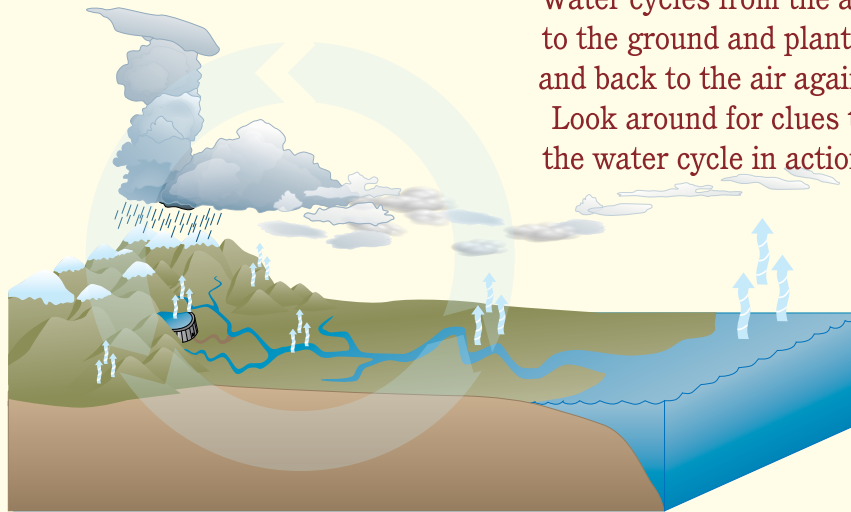
Cardiff, CA 92007

(760) 944-3502

ILLUSTRATOR INFOGRAPHIC

Water Cycle drawing for water agency. Illustrations created in Adobe Illustrator and layout in InDesign.

Become a Water Cycle Watcher



Water cycles from the air to the ground and plants, and back to the air again. Look around for clues to the water cycle in action.

- Clouds and fog are made of water droplets.



- When clouds are heavy with water, it rains.



- Dew on plants comes from water in the air.



- When there's little water in the air, it's sunny and clear.



- Dry leaves and dirt mean it hasn't rained recently.

